

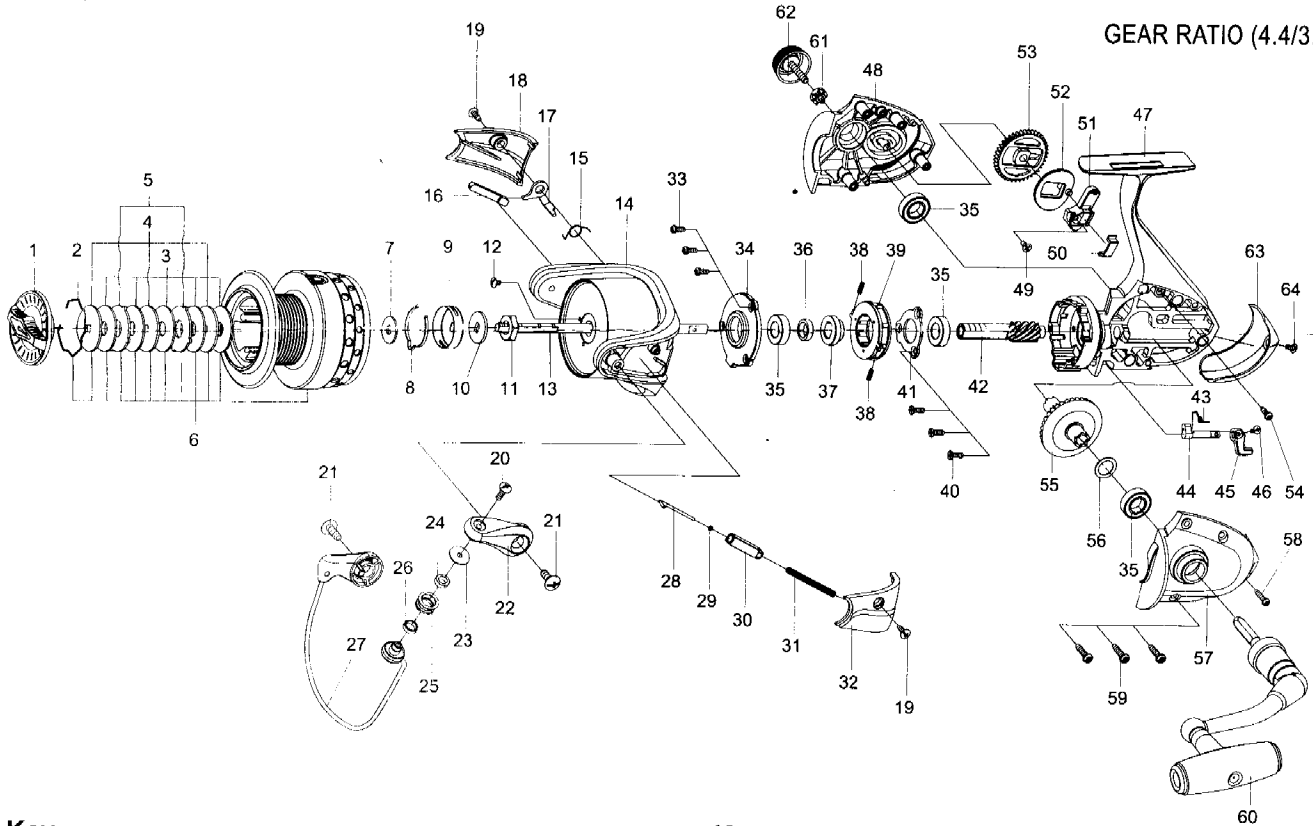


SPINNING REEL

DYNASPIN

GQ5000 / GQ6000

GEAR RATIO (4.4/3.3)



Key NO.	Parts No.	Parts name	Key NO.	Parts No.	Parts name
1	2YD-097-04	DRAG KNOB ASSEMBLY	36	2C1-126-01	COLLAR
2	2E4-034-01	DRAG WASHER RETAINER	37	2A4-019-05	ONE-WAY CLUTCH INNER TUBE
3	2W1-090-02	082-260 WASHER	38	2Q1-071-01	CAGE SPRING
4	2W2-061-01	KEY WASHER	39	2YZ-020-01	ONE-WAY CLUTCH BEARING ASSEMBLY
5	2W3-031-01	EARED WASHER	40	2E2-052-02	F26M-080 SCREW
6	2YT-417-04	SPOOL TOTAL ASSEMBLY	41	2F5-259-01	BEARING RETAINER
7	2W2-011-01	KEY WASHER	42	2G2-162-01	PINION GEAR
8	2L3-015-01	CLICK LEAF SPRING	43	2Q3-009-01	ANTI-REVERSE SPRING
9	2F8-019-01	CLICK LEAF SPRING HOLDER	44	2A2-075-01	ANTI-REVERSE CAM
10	2W2-019-01	KEY WASHER	45	2A1-034-04	ANTI-REVERSE LEVER
11	2E3-003-01	ROTOR NUT	46	2E2-013-02	B20M-060 SCREW
12	2E1-036-01	B26-040 SCREW	47	2YB-244-03	BODY ASSEMBLY
13	2M3-149-01	MAIN SHAFT	48	2B2-123-03	BODY COVER (R)
14	2R1-143-03	ROTOR	49	2E2-014-01	F26M-060 SCREW
15	2Q3-108-01	BAIL SPRING	50	2E5-062-01	OSCILLATING SILDER RETAINER
16	2R5-178-01	BAIL PAWL	51	2M1-073-01	OSCILLATING SILDER
17	2R5-172-01	BAIL TRIP LEVER	52	2M2-015-01	OSCILLATING CAM
18	2R4-197-01	BAIL TRIP COVER	53	2G3-093-01	OSCILLATING GEAR
19	2E1-016-02	B26-080 SCREW	54	2E1-045-01	A26-080 SCREW
20	2E2-007-01	B30M-100 SCREW	55	2G1-152-01	DRIVE GEAR
21	2E1-072-01	B40-120 SCREW	56	2W1-014-01	091-130 WASHER
22	2R2-067-03	BAIL ARM	57	2B2-122-03	BODY COVER (L)
23	2C1-049-01	LINE ROLLER COLLAR	58	2E1-005-02	A26-120 SCREW
24	2Z1-001-05	508-2.5 BALL BEARING	59	2E1-006-02	A30-130 SCREW
25	2R6-018-02	LINE ROLLER	60	2YH-256-02	HANDLE TOTAL ASSEMBLY
26	2C1-068-01	COLLAR	61	2C3-047-01	HANDLE SCREW SLEEVE
27	2YL-154-04	BAIL ASSEMBLY	62	2H6-021-01	HANDLE SCREW CAP
28	2R5-186-01	BAIL TRIP SHAFT	63	2F5-430-04	REAR COVER
29	2W1-199-01	015-027 WASHER	64	2E2-055-01	B23M-050 SCREW
30	2C2-127-01	BAIL SPRING GUIDE	GQ6000	SPECIAL PARTS	
31	2Q1-127-01	BAIL SPRING	6	2YT-418-04	SPOOL TOTAL ASSEMBLY
32	2R4-196-01	BAIL SPRING COVER	GEAR RATIO 3.3	SPECIAL PARTS	
33	2E2-037-01	A26M-060 SCREW	42	2G2-171-01	PINION GEAR
34	2F8-124-01	BEARING HOLDER	55	2G1-154-01	DRIVE GEAR
35	2Z1-035-05	917-5 BALL BEARING			