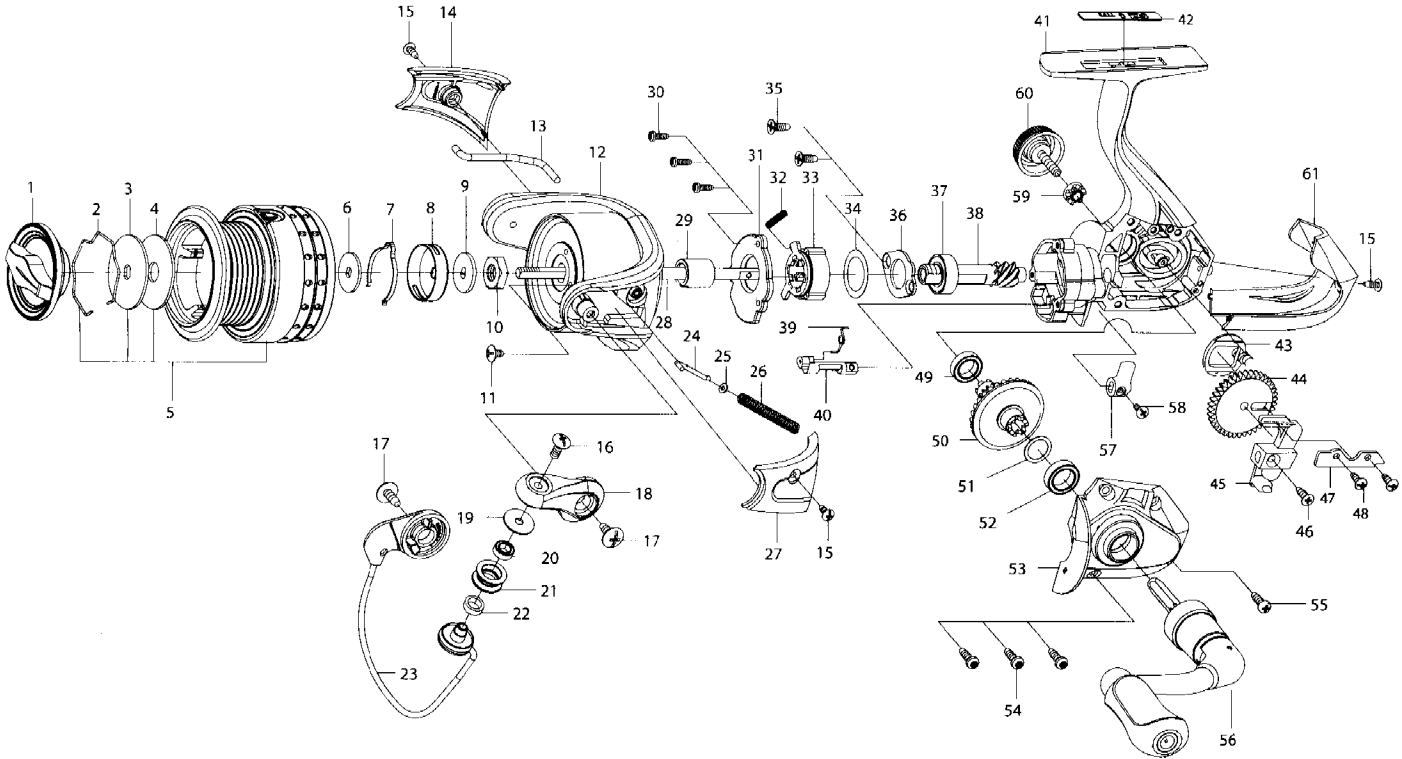




SPINNING REEL

SPINFOCUS

GU2000 / GU2500



KEY NO.	Parts No.	Parts name	KEY NO.	Parts No.	Parts name
1	2YD-094-07	DRAG KNOB ASSEMBLY	33	2YZ-024-01	ONE-WAY CLUTCH BEARING ASSEMBLY
2	2E4-034-01	DRAG WASHER RETAINER	34	2W1-260-01	120-169 WASHER
3	2W2-071-01	KEY WASHER	35	2E1-063-01	F26-70 SCREW
4	2W1-226-01	080-260 WASHER	36	2F5-212-01	BEARING RETAINER
5	2YT-467-01	SPOOL TOTAL ASSEMBLY	37	2Z1-003-05	714-5 BALL BEARING
6	2W2-020-01	KEY WASHER	38	2G2-181-01	PINION GEAR
7	2L3-014-01	CLICK LEAF SPRING	39	2Q3-122-01	ANTI-REVERSE SPRING
8	2F8-013-01	CLICK LEAF SPRING HOLDER	40	2A2-098-01	ANTI-REVERSE CAM
9	2W2-015-01	KEY WASHER	41	2B1-187-01	BODY
10	2E3-007-01	ROTOR NUT	42	2N2-028-11	FOOT NAME PLATE
11	2E1-036-01	B26-040 SCREW	43	2M2-018-01	OSCILLATING CAM
12	2R1-150-01	ROTOR	44	2G3-084-01	OSCILLATING GEAR
13	2R5-187-01	BAIL PAWL	45	2M1-079-01	OSCILLATING SILDER
14	2R4-211-01	BAIL TRIP COVER	46	2E2-030-02	F20M-050 SCREW
15	2E1-020-02	B22-055 SCREW	47	2F6-131-01	CLUTCH PAWL RETAINER
16	2E2-007-01	B30M-100 SCREW	48	2E1-075-01	B22-045 SCREW
17	2E1-025-01	B30-080 SCREW	49	2Z1-009-05	711-3 BALL BEARING
18	2R2-063-10	BAIL ARM	50	2G1-069-01	DRIVE GEAR
19	2C1-034-01	LINE ROLLER COLLAR	51	2W1-035-00	080-105 WASHER
20	2Z1-012-05	407-2.5 BALL BEARING	52	2Z1-010-05	812-3.5 BALL BEARING
21	2R6-020-01	LINE ROLLER	53	2B2-132-01	BODY COVER
22	2C2-032-01	LINE ROLLER BUSH	54	2E1-045-01	A26-080 SCREW
23	2YL-162-01	BAIL ASSEMBLY	55	2E1-050-01	A20-060 SCREW
24	2R5-188-01	BAIL TRIP SHAFT	56	2YH-363-02	HANDLE TOTAL ASSEMBLY
25	2W1-044-01	016-035 WASHER	57	2A1-036-01	ANTI-REVERSE LEVER
26	2Q1-132-01	BAIL SPRING	58	2E2-099-01	B20M-050 SCREW
27	2R4-210-01	BAIL SPRING COVER	59	2C3-042-01	HANDLE SCREW SLEEVE
28	2M3-161-01	MAIN SHAFT	60	2H6-017-01	HANDLE SCREW CAP
29	2A4-075-01	ONE-WAY CLUTCH INNER TUBE	61	2F5-453-01	REAR COVER
30	2E1-073-01	B20-060 SCREW	GU2500	SPECIAL PARTS	
31	2F5-461-01	ROLLER CLUTCH RETAINER	5	2YT-468-01	SPOOL TOTAL ASSEMBLY
32	2Q1-071-02	CAGE SPRING			