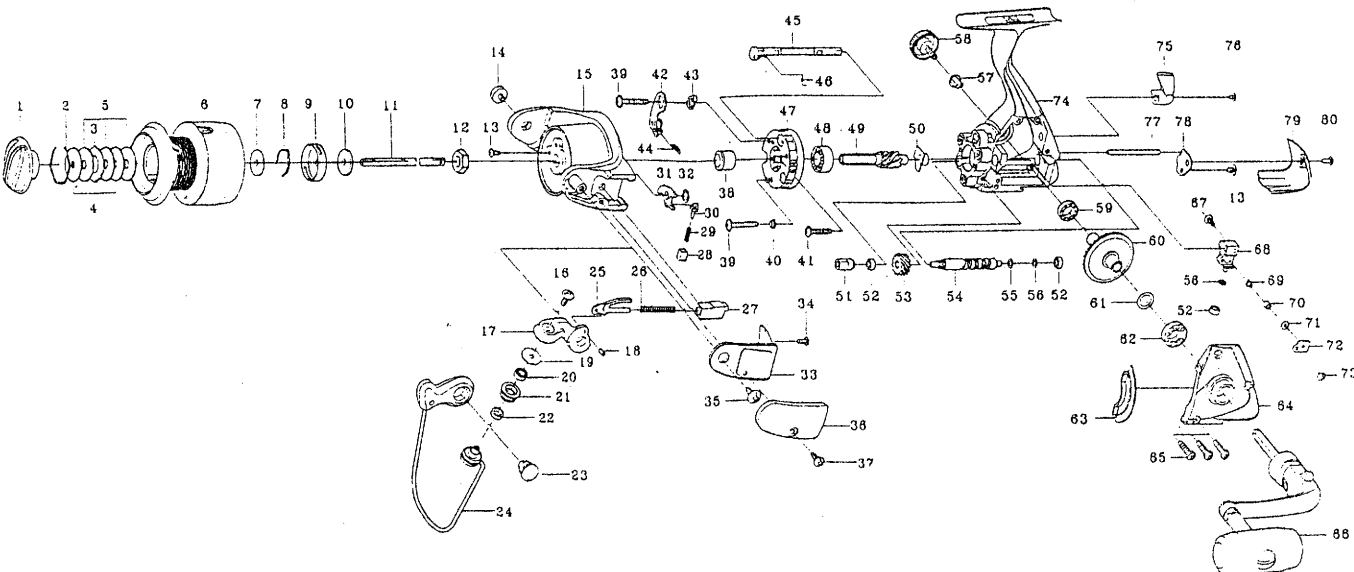


Please order by parts number,not key number
Bitte,Best:-Nr.angeben(Nicht " key " -nr.)
Veuillez indiquer le numero de la piece(Non " key " no.)



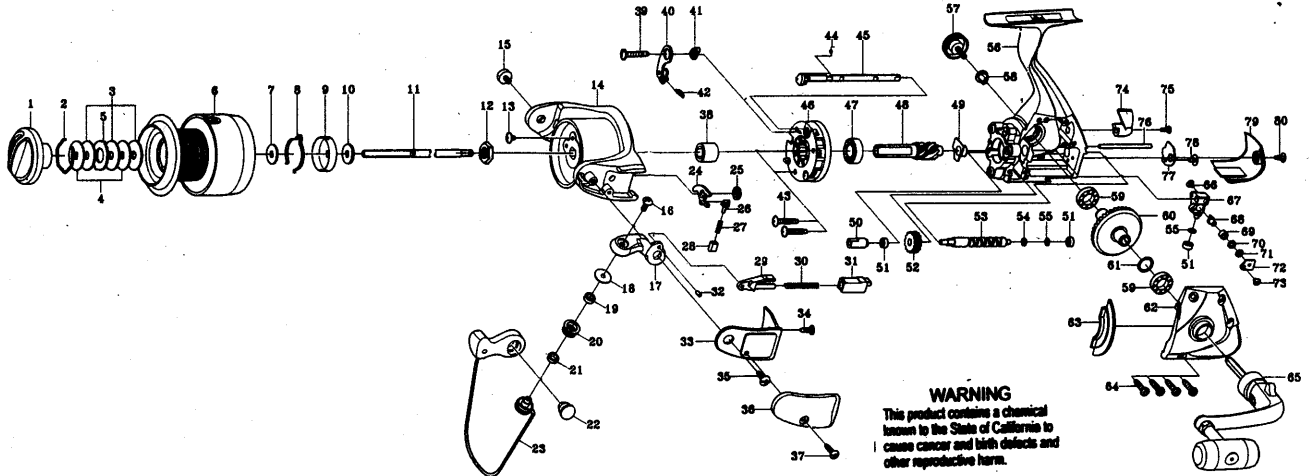
SPINNING REEL CAMRY GP3000/3500



| Key NO. | Parts No. | Parts name | Key NO. | Parts No. | Parts name |
|---------|------------|----------------------------|---------------|------------|----------------------------|
| 2-6 | 2YT-124-01 | SPOOL ASSEMBLY | 44 | 2Q2-008-01 | CLICK PAWL SPRING |
| 1 | 2YD-024-04 | DRAG KNOB ASSEMBLY | 45 | 2A2-028-01 | ANTI-REVERSE CAM |
| | 2E4-009-01 | DRAG WASHER RETAINER | 46 | 2Q3-009-01 | ANTI-REVERSE SPRING |
| | 2W3-014-01 | EARED WASHER | 47 | 2YZ-003-01 | ONEWAY CLUTCH BEARING ASSY |
| | 2W2-013-01 | KEY WASHER | 48 | 2Z1-003-01 | 714-5 BALL BEARING |
| 5 | 2W1-052-01 | 050-187 WASHER | 49 | 2G2-042-01 | PINION GEAR |
| 6 | 2YS-063-01 | SPOOL ASSEMBLY | 50 | 2C2-033-01 | PINION GEAR BUSHING |
| 7 | 2W2-020-01 | KEY WASHER | 51 | 2C2-037-01 | WORM SHAFT BUSHING C |
| 8 | 2L3-014-01 | SPOOL CLICK LEAF SPRING | 52 | 2Z1-014-01 | 306-2.5 BALL BEARING |
| 9 | 2F8-013-01 | CLICK LEAF SPRING HOLDER | 53 | 2G3-019-01 | OSCILLATING GEAR |
| 10 | 2W2-015-01 | KEY WASHER | 54 | 2M4-009-01 | WORM SHAFT |
| 11 | 2M3-040-01 | MAIN SHAFT | 55 | 2W1-058-02 | 030-050 WASHER |
| 12 | 2E3-007-01 | NUT | 56 | 2W1-058-03 | 030-050 WASHER |
| 13 | 2E1-036-01 | B26-040 SCREW | 57 | 2C3-017-01 | HANDLE SCREW SLEEVE |
| 14 | 2E0-008-02 | BAIL HOLDER SCREW | 58 | 2H6-001-02 | HANDLE SCREW CAP |
| 15 | 2YR-030-02 | ROTOR ASSEMBLY | 59 | 2Z1-009-01 | 711-3 BALL BEARING |
| 16 | 2E2-018-02 | B30M-080 SCREW | 60 | 2G1-026-01 | DRIVE GEAR |
| 17 | 2R2-024-02 | BAIL ARM | 61 | 2W1-035-00 | 080-105 WASHER |
| 18 | 2P1-012-01 | BAIL ARM PIN | 62 | 2Z1-004-01 | 814-3.5 BALL BEARING |
| 19 | 2C1-034-01 | LINE ROLLER COLLAR | 63 | 2B4-005-02 | BODY COVER FLANGE |
| 20 | 2Z1-012-01 | 407-2.5 BALL BEARING | 64 | 2YC-088-01 | BODY COVER ASSEMBLY |
| 21 | 2R6-012-01 | LINE ROLLER | 65 | 2E1-031-02 | A26-140 SCREW |
| 22 | 2C2-032-01 | LINE ROLLER BUSHING | 66 | 2YH-075-01 | HANDLE ASSEMBLY |
| 23 | 2E3-019-01 | BAIL HOLDER NUT | 67 | 2E2-009-01 | F23M-060 SCREW |
| 24 | 2YL-069-02 | BAIL ASSEMBLY | 68 | 2M1-025-01 | OSCILLATING SLIDER |
| 25 | 2R5-064-01 | BAIL TRIP SHAFT | 69 | 2M5-001-01 | LINE GUIDE PIN |
| 26 | 2Q1-042-01 | BAIL SPRING | 70 | 2C2-034-01 | LINE GUIDE PIN COLLAR |
| 27 | 2C2-046-01 | BUSHING | 71 | 2W1-059-01 | 020-049 WASHER |
| 28 | 2C2-019-01 | BAIL TRIP SPRING HOLDER | 72 | 2F5-083-01 | OSCILLATING SLIDER COVER |
| 29 | 2Q1-022-01 | BAIL TRIP SPRING | 73 | 2E2-022-01 | B20M-030 SCREW |
| 30 | 2R5-051-01 | BAIL TRIP SPRING SHAFT | 74 | 2YB-085-01 | BODY ASSEMBLY |
| 31 | 2R5-063-01 | BAIL TRIP LEVER | 75 | 2A1-025-01 | ANTI-REVERSE LEVER |
| 32 | 2W1-106-01 | 047-070 WASHER | 76 | 2E2-013-03 | B20M-060 SCREW |
| 33 | 2R4-076-02 | BAIL SPRING COVER | 77 | 2P1-025-01 | OSCILLATING SLIDER PIN |
| 34 | 2E1-020-01 | B22-055 SCREW | 78 | 2F5-084-01 | WORM SHAFT COVER |
| 35 | 2E1-025-01 | b30-080 SCREW | 79 | 2F5-087-02 | REAR COVER |
| 36 | 2F5-073-02 | BAIL SPRING COVER | 80 | 2E1-020-01 | B22-055 SCREW |
| | 2E1-046-02 | B26-110 SCREW | GP3500 | | |
| | 2A4-021-01 | ONEWAY CLUTCH INNER TUBE | 2-6 | 2YT-129-01 | SPOOL ASSEMBLY |
| 39 | 2E1-049-01 | D26-170 SCREW | 6 | 2YS-069-01 | SPOOL ASSEMBLY |
| 40 | 2C1-035-01 | COLLAR | 15 | 2YR-033-02 | ROTOR ASSEMBLY |
| 41 | 2E1-027-01 | B26-140 SCREW | 24 | 2YL-073-02 | BAIL ASSEMBLY |
| 42 | 2YA-008-01 | CLICK TRIP LEVER ASSEMBLY | 31 | 2R5-066-01 | BAIL TRIP LEVER |
| 43 | 2F8-012-01 | ANTI-REVERSE SPRING ANCHOR | 33 | 2R4-081-02 | BAIL SPRING COVER |



SPINNING REEL CAMRY GP4000/4500



WARNING
 This product contains a chemical known to the State of California to cause cancer and birth defects and other reproductive harm.

| Key NO. | Parts No. | Parts name | Key NO. | Parts No. | Parts name |
|---------|------------|----------------------------|-----------------------------|------------|----------------------------|
| 2-6 | 2YT-123-01 | SPOOL ASSEMBLY | 44 | 2Q3-009-01 | ANTI-REVERSE SPRING |
| 1 | 2YD-030-02 | DRAG KNOB ASSEMBLY | 45 | 2A2-027-01 | ANTI-REVERSE CAM |
| 2 | 2E4-009-01 | DRAG WASHER RETAINER | 46 | 2YZ-006-01 | ONEWAY CLUTCH BEARING ASSY |
| 3 | 2W1-052-01 | 050-187 WASHER | 47 | 2Z1-005-01 | 816-5 BALL BEARING |
| 4 | 2W2-005-01 | KEY WASHER | 48 | 2G2-041-01 | PINION GEAR |
| 5 | 2W3-003-01 | EARED WASHER | 49 | 2C2-048-01 | PINION GEAR BUSHING |
| 6 | 2YS-062-01 | SPOOL ASSEMBLY | 50 | 2C2-049-01 | WORM SHAFT BUSHING |
| 7 | 2W2-023-01 | KEY WASHER | 51 | 2Z1-014-01 | 306-2.5 BALL BEARING |
| 8 | 2L3-018-01 | SPOOL CLICK LEAF SPRING | 52 | 2G3-018-01 | OSCILLATING GEAR |
| 9 | 2F8-027-01 | CLICK LEAF SPRING HOLDER | 53 | 2M4-008-01 | WORM SHAFT |
| 10 | 2W2-024-01 | KEY WASHER | 54 | 2W1-058-02 | 030-050 WASHER |
| 11 | 2M3-039-01 | MAIN SHAFT | 55 | 2W1-058-03 | 030-050 WASHER |
| 12 | 2E3-002-01 | ROTOR NUT | 56 | 2YB-092-01 | BODY ASSEMBLY |
| 13 | 2E1-028-01 | B26-050 SCREW | 57 | 2H6-001-02 | HANDLE SCREW CAP |
| 14 | 2YR-029-02 | ROTOR ASSEMBLY | 58 | 2C3-023-01 | HANDLE SCREW SLEEVE |
| 15 | 2E0-008-02 | BAIL HOLDER SCREW | 59 | 2Z1-004-01 | 814-3.5 BALL BEARING |
| 16 | 2E2-018-02 | B30M-080 SCREW | 60 | 2G1-025-01 | DRIVE GEAR |
| 17 | 2R2-023-02 | BAIL ARM | 61 | 2W1-035-00 | 080-105 WASHER |
| 18 | 2C1-034-01 | LINE ROLLER COLLAR | 62 | 2YC-085-01 | BODY COVER ASSEMBLY |
| 19 | 2Z1-012-02 | 407-2.5 BALL BEARING | 63 | 2B4-004-02 | BODY COVER FLANGE |
| 20 | 2R6-012-01 | LINE ROLLER | 64 | 2E1-006-03 | A30-130 SCREW |
| 21 | 2C2-032-01 | LINE ROLLER BUSHING | 65 | 2YH-078-01 | HANDLE ASSEMBLY |
| 22 | 2E3-019-01 | BAIL HOLDER NUT | 66 | 2E2-009-01 | F23M-060 SCREW |
| 23 | 2YL-068-02 | BAIL ASSEMBLY | 67 | 2M1-024-01 | OSCILLATING SLIDER |
| 24 | 2R5-062-01 | BAIL TRIP LEVER | 68 | 2M5-004-01 | LINE GUIDE PIN |
| 25 | 2W1-054-02 | 052-080 WASHER | 69 | 2C2-034-01 | LINE GUIDE PIN COLLAR |
| 26 | 2R5-051-01 | BAIL TRIP SPRING SHAFT | 70 | 2W1-107-02 | 030-050 WASHER |
| 27 | 2Q1-022-01 | BAIL TRIP SPRING | 71 | 2W1-059-01 | 020-049 WASHER |
| 28 | 2C2-019-01 | BAIL TRIP SPRING HOLDER | 72 | 2F5-083-01 | OSCILLATING SLIDER COVER |
| 29 | 2R5-061-01 | BAIL TRIP SHAFT | 73 | 2E2-022-01 | B20M-030 SCREW |
| 30 | 2Q1-038-01 | BAIL SPRING | 74 | 2A1-025-01 | ANTI-REVERSE LEVER |
| 31 | 2C2-047-01 | BUSHING | 75 | 2E2-013-03 | B20M-060 SCREW |
| 32 | 2P1-016-01 | BAIL ARM PIN | 76 | 2P1-024-01 | OSCILLATING SLIDER PIN |
| 33 | 2R4-077-02 | BAIL SPRING COVER | 77 | 2F5-078-01 | WORM SHAFT COVER |
| 34 | 2E1-016-03 | B26-080 SCREW | 78 | 2E1-036-01 | B26-040 SCREW |
| 35 | 2E1-010-01 | b30-100 SCREW | 79 | 2F5-080-02 | REAR COVER |
| 36 | 2F5-076-02 | BAIL SPRING COVER | 80 | 2E1-016-03 | B26-080 SCREW |
| 37 | 2E1-046-02 | B26-110 SCREW | GP4500 SPECIAL PARTS | | |
| 38 | 2A4-026-01 | ONEWAY CLUTCH INNER TUBE | 2-6 | 2YT-125-01 | SPOOL ASSEMBLY |
| 39 | 2E1-044-01 | D30-180 SCREW | 6 | 2YS-064-01 | SPOOL ASSEMBLY |
| 40 | 2YA-012-01 | CLICK TRIP LEVER ASSEMBLY | 14 | 2YR-041-02 | ROTOR ASSEMBLY |
| 41 | 2F8-012-01 | ANTI-REVERSE SPRING ANCHOR | 23 | 2YL-071-02 | BAIL ASSEMBLY |
| 42 | 2Q2-008-01 | CLICK PAWL SPRING | 24 | 2R5-065-01 | BAIL TRIP LEVER |
| 43 | 2E1-043-01 | B30-165 SCREW | 33 | 2R4-078-02 | BAIL SPRING COVER |