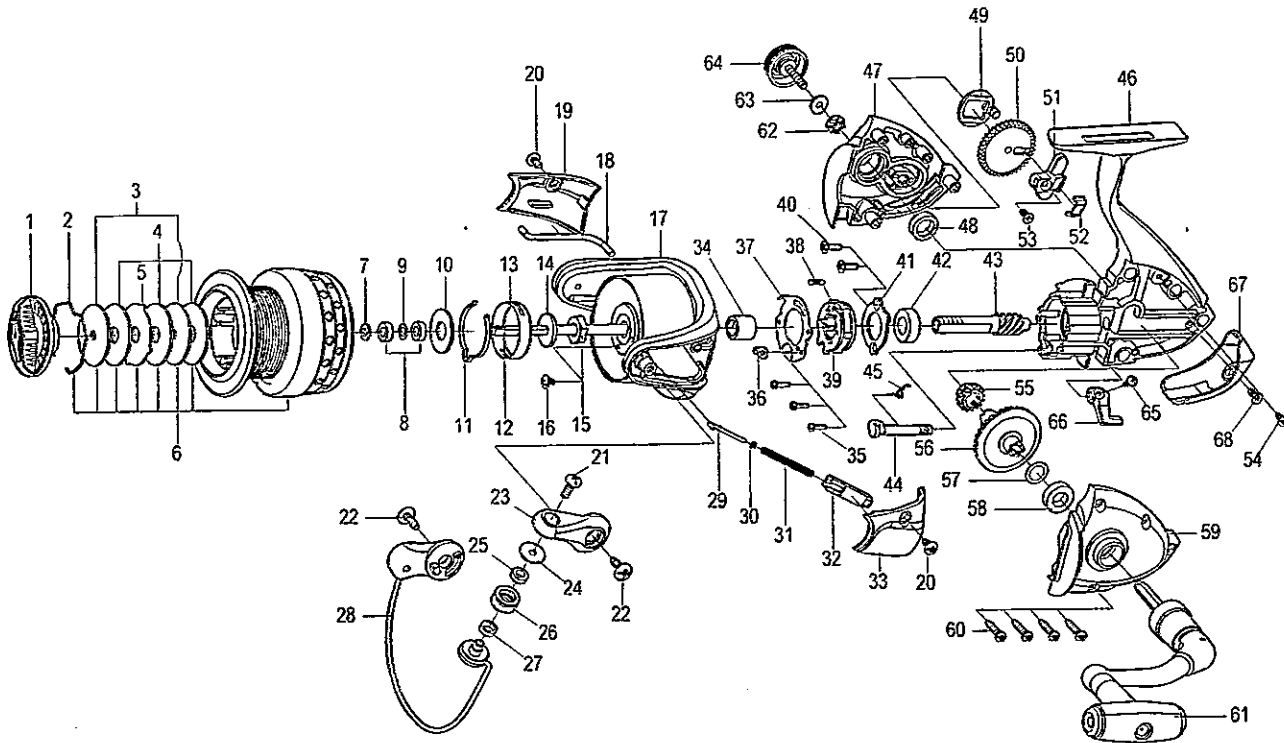




SPINNING REEL

SNOOK SERIES

SN4000S



Key NO.	Parts No.	Parts name	Key NO.	Parts No.	Parts name
1	2YD-089-12	DRAG KNOB ASSEMBLY	35	2E2-047-02	A20M-065 SCREW
2	2E4-034-01	DRAG WASHER RETAINER	36	2F8-079-01	ANTI-REVERSE SPRING ANCHOR
3	2W2-071-01	KEY WASHER	37	2F5-192-01	ROLLER CLUTCH RETAINER
4	2W1-226-01	080-260 WASHER	38	2Q2-016-01	SPRING
5	2W3-035-01	EARED WASHER	39	2YZ-014-01	ONE-WAY CLUTCH BEARING ASSEMBLY
6	2YT-416-11	SPOOL TOTAL ASSEMBLY	40	2E2-052-01	F26M-080 SCREW
7	2W2-016-01	KEY WASHER	41	2F5-193-01	BEARING RETAINER
8	2Z1-029-05	408-3 BALL BEARING	42	2Z1-003-05	714-5 BALL BEARING
9	2C1-119-01	SPACER	43	2G2-155-01	PINION GEAR
10	2W1-053-01	080-185 WASHER	44	2A2-031-01	ANTI-REVERSE CAM
11	2L3-015-01	CLICK LEAF SPRING	45	2Q3-009-01	ANTI-REVERSE SPRING
12	2M3-120-01	MAIN SHAFT	46	2YB-206-12	BODY ASSEMBLY
13	2F8-019-02	CLICK LEAF SPRING HOLDER	47	2B2-110-12	BODY COVER(R)
14	2W2-015-01	KEY WASHER	48	2Z1-010-05	812-3.5 BALL BEARING
15	2E3-007-01	ROTOR NUT	49	2M2-016-01	OSCILLATING CAM
16	2E1-036-01	B26-040 SCREW	50	2G3-081-01	OSCILLATING GEAR
17	2R1-135-08	ROTOR	51	2M1-057-01	OSCILLATING SILDER
18	2R5-162-01	BAIL PAWL	52	2E5-051-01	OSCILLATING SILDER RETAINER
19	2R4-181-02	BAIL TRIP COVER	53	2E2-009-02	F23M-060 SCREW
20	2E1-015-02	B26-060 SCREW	54	2E1-020-02	B22-055 SCREW
21	2E2-018-03	B30M-080 SCREW	55	2G3-068-01	DRIVE PINION
22	2E1-010-01	b30-100 SCREW	56	2G1-141-01	DRIVE GEAR
23	2R2-062-06	BAIL ARM	57	2W1-019-00	071-103 WASHER
24	2C1-034-01	LINE ROLLER COLLAR	58	2Z1-039-05	713-4 BALL BEARING
25	2Z1-012-05	407-2.5 BALL BEARING	59	2B2-111-12	BODY COVER(L)
26	2R6-020-02	LINE ROLLER	60	2E1-005-02	A26-120 SCREW
27	2C2-032-01	LINE ROLLER BUSH	61	2YH-347-05	HANDLE ASSEMBLY
28	2YL-145-08	BAIL ASSEMBLY	62	2C3-042-01	HANDLE SCREW SLEEVE
29	2R5-135-01	BAIL TRIP SHAFT	63	2W1-004-01	029-080 WASHER
30	2W1-199-01	015-027 WASHER	64	2H6-017-02	HANDLE SCREW CAP
31	2Q1-128-01	BAIL SPRING	65	2E2-013-02	B20M-060 SCREW
32	2C2-119-01	BAIL SPRING GUIDE	66	2A1-033-08	ANTI-REVERSE LEVER
33	2R4-180-02	BAIL SPRING COVER	67	2F5-389-02	REAR COVER
34	2A4-021-01	ONE-WAY CLUTCH INNER TUBE	68	2E2-051-01	B23M-060 SCREW