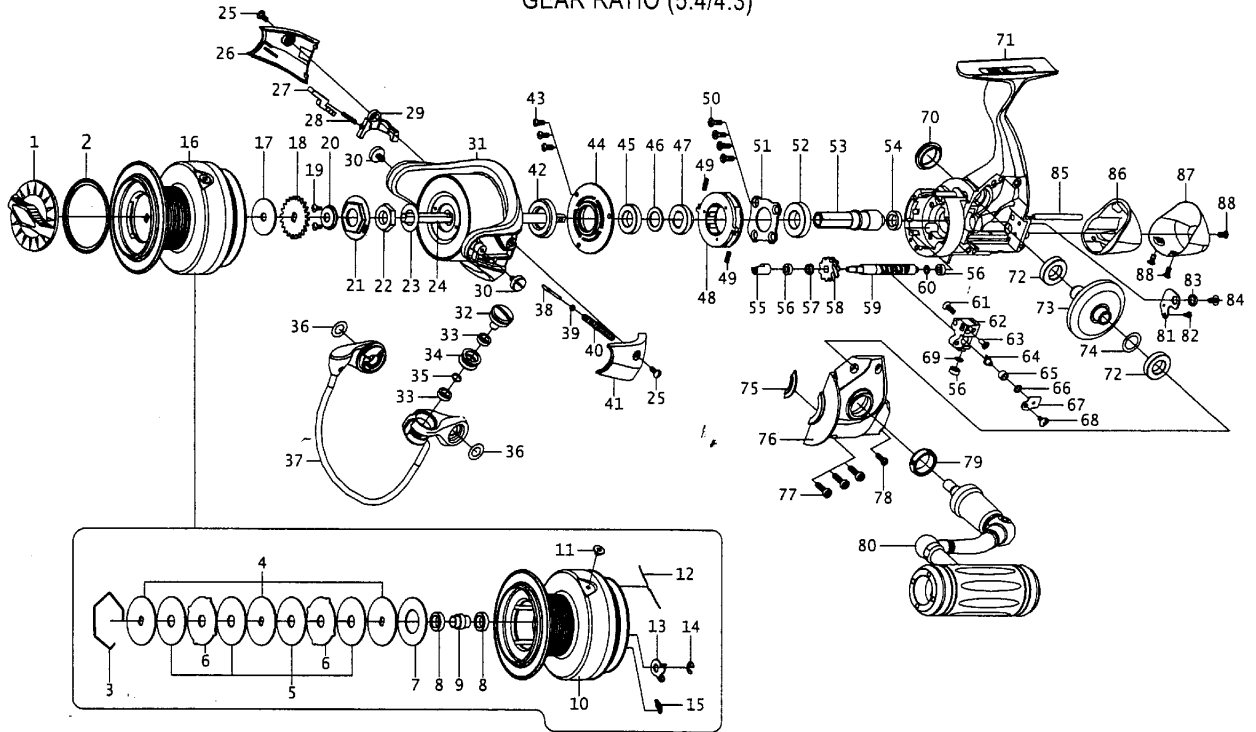


TG6000

GEAR RATIO (5.4/4.3)



17

Key NO.	Parts No.	Parts name	Key NO.	Parts No.	Parts name	Key NO.	Parts No.	Parts name
1	2YD-101-01	DRAG KNOB ASSEMBLY	33	2Z1-001-05	508-2.5 BALL BEARING	65	2C2-034-01	LINE GUIDE PIN BUSH
2	2E9-049-01	PROOF WATER RING	34	2R6-028-02	LINE ROLLER	66	2W1-058-04	030-050 WASHER
3	2E4-040-01	DRAG WASHER RETAINER	35	2W4-008-01	SPACER	67	2F5-051-01	OSCILLATING SLIDER COVER
4	2W2-088-01	KEY WASHER	36	2W1-267-01	061-105 WASHER	68	2E2-006-03	B26M-050 SCREW
5	2W1-263-02	070-285 WASHER	37	2YL-171-01	BAIL ASSEMBLY	69	2W1-058-03	030-050 WASHER
6	2W3-041-01	EARED WASHER	38	2R5-184-01	BAIL TRIP SHAFT	70	2H6-011-02	HANDLE SCREW CAP
7	2W1-264-02	140-285 WASHER	39	2W1-044-01	016-035 WASHER	71	2YB-250-01	BODY ASSEMBLY
8	2Z1-009-05	711-3 BALL BEARING	40	2Q1-122-01	BAIL SPRING	72	2Z1-007-05	917-4 BALL BEARING
9	2C1-124-01	SPACER	41	2R4-223-01	BAIL SPRING COVER	73	2G1-166-01	DRIVE GEAR
10	2S1-415-01	SPOOL	42	2E9-046-01	PROOF WATER RING	74	2W1-014-03	091-130 WASHER
11	2S4-019-01	LINE STOPPER	43	2E2-040-01	b26M-060 SCREW	75	2E9-051-01	PROOF WATER RING
12	2Q3-121-01	SPRING	44	2F5-441-01	ROLLER CLUTCH RETAINER	76	2B2-027-03	BODY COVER
13	2F4-023-01	CLICK PAWL	45	2Z1-007-05	917-4 BALL BEARING	77	2E2-064-03	H30M-100 SCREW
14	2E5-013-01	E3.0 RETAINER	46	2C1-123-01	SPACER	78	2E2-031-01	A26M-075 SCREW
15	2Q2-007-01	CLICK PAWL SPRING	47	2A4-019-05	ONE-WAY CLUTCH INNER TUBE	79	2B4-009-01	BODY FLANGE
16	2YT-511-01	SPOOL TOTAL ASSEMBLY	48	2YZ-015-01	ONE-WAY CLUTCH BEARING ASSEMBLY	80	2YH-463-01	HANDLE TOTAL ASSEMBLY
17	2W1-266-04	050-210 WASHER	49	2Q1-071-01	CAGE SPRING	81	2F5-068-01	WORM SHAFT COVER
18	2F3-074-01	CLICK GEAR	50	2E2-052-02	F26M-080 SCREW	82	2E2-050-01	A20M-035 SCREW
19	2E2-092-01	B20M-050 SCREW	51	2F5-178-01	BEARING RETAINER	83	2W4-006-01	SPACER
20	2E9-050-01	PROOF WATER RING	52	2Z1-008-05	1020-5 BALL BEARING	84	2E2-006-03	B26M-050 SCREW
21	2F6-120-01	ROTOR NUT HOLDING PLATE	53	2G2-170-01	PINION GEAR	85	2P1-021-01	OSCILLATING SLIDER PIN
22	2E3-003-01	ROTOR NUT	54	2Z1-009-05	711-3 BALL BEARING	86	2F6-014-01	WATER SHIELD
23	2W1-265-01	092-160 WASHER	55	2C2-130-01	WORM SHAFT BUSH	87	2F5-067-03	REAR COVER
24	2M3-154-01	MAIN SHAFT	56	2Z1-014-05	306-2.5 BALL BEARING	88	2E2-095-01	B26M-050 SCREW
25	2E0-010-02	X26M-060 SCREW	57	2C1-046-01	COLLAR	TG6000<4.3> SPECIAL PARTS		
26	2R4-224-01	BAIL TRIP COVER	58	2G3-095-01	OSCILLATING GEAR	10	2S1-415-02	SPOOL
27	2R5-180-01	BAIL TRIP LEVER	59	2M4-006-02	WORM SHAFT	16	2YT-511-02	SPOOL TOTAL ASSEMBLY
28	2Q1-131-01	TAPPET SPRING	60	2W1-058-04	030-050 WASHER	53	2G2-172-01	PINION GEAR
29	2R5-192-01	GRIND LEVER	61	2E2-052-02	F26M-080 SCREW	58	2G3-097-01	OSCILLATING GEAR
30	2E0-008-01	BAIL HOLDER SCREW	62	2M1-022-01	OSCILLATING SLIDER	73	2G1-167-01	DRIVE GEAR
31	2R1-159-01	ROTOR	63	2E2-009-02	F23M-060 SCREW			
32	2E0-004-03	LINE ROLLER SCREW	64	2M5-001-01	LINE GUIDE PIN			

18