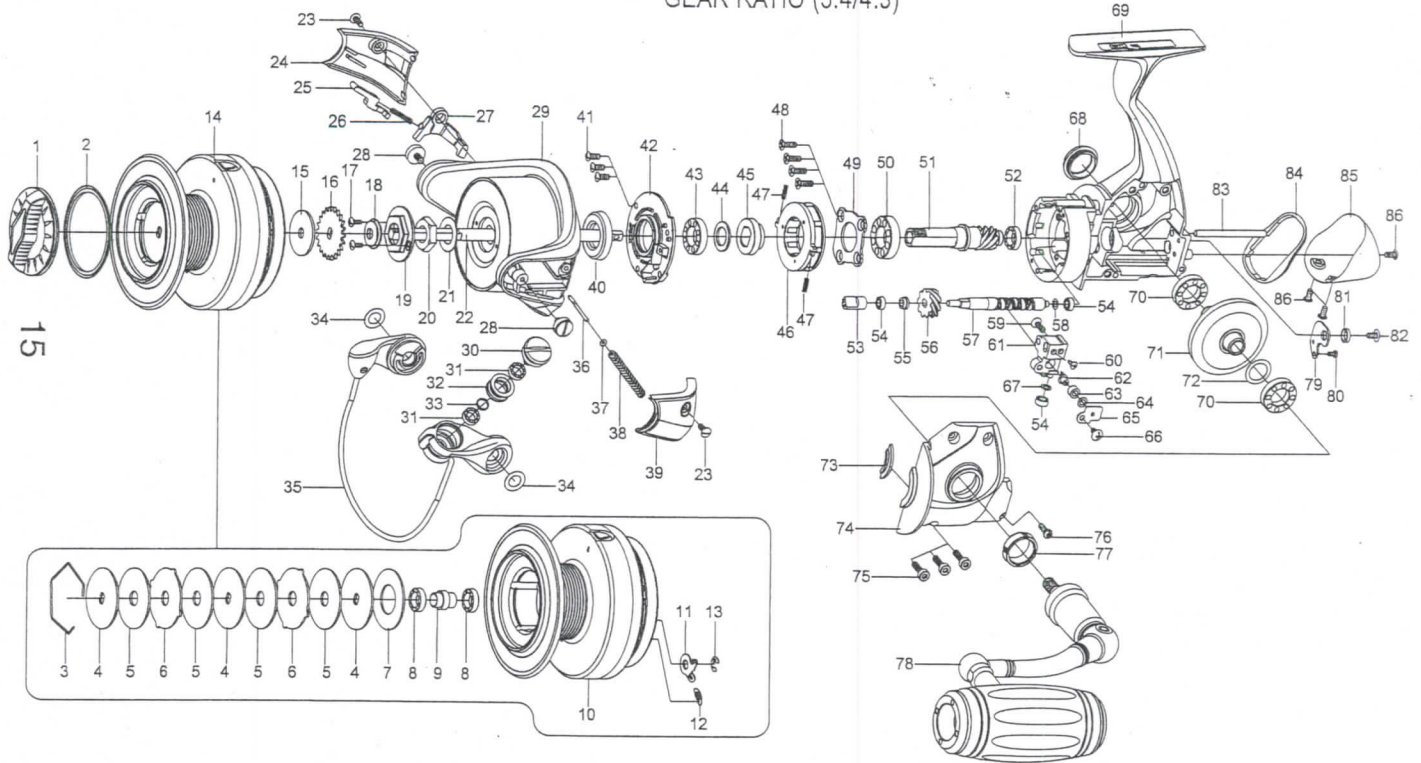


TG8000

GEAR RATIO (5.4/4.3)



Key NO.	Parts No.	Parts name	Key NO.	Parts No.	Parts name	Key NO.	Parts No.	Parts name
1	2YD-101-01	DRAG KNOB ASSEMBLY	33	2W4-008-01	SPACER	63	2C2-034-01	LINE GUIDE PIN BUSH
2	2E9-049-01	PROOF WATER RING	34	2W1-267-01	061-105 WASHER	64	2W1-058-04	030-050 WASHER
3	2E4-040-01	DRAG WASHER RETAINER	35	2YL-160-01	BAIL ASSEMBLY	65	2F5-051-01	OSCILLATING SLIDER COVER
4	2W2-088-01	KEY WASHER	36	2R5-184-01	BAIL TRIP SHAFT	66	2E2-006-03	B26M-050 SCREW
5	2W1-263-01	070-285 WASHER	37	2W1-044-01	016-035 WASHER	67	2W1-058-03	030-050 WASHER
6	2W3-041-01	EARED WASHER	38	2Q1-122-01	BAIL SPRING	68	2H6-011-02	HANDLE SCREW CAP
7	2W1-264-01	140-285 WASHER	39	2YR-073-01	BAIL SPRING COVER ASSEMBLY	69	2YB-250-01	BODY ASSEMBLY
8	2Z1-009-05	711-3 BALL BEARING	40	2E9-046-01	PROOF WATER RING	70	2Z1-007-05	917-4 BALL BEARING
9	2C1-124-01	SPACER	41	2E2-040-01	b26M-060 SCREW	71	2G1-166-01	DRIVE GEAR
10	2YS-288-01	SPOOL ASSEMBLY	42	2F5-441-01	ROLLER CLUTCH RETAINER	72	2W1-014-03	091-130 WASHER
11	2F4-023-01	CLICK PAWL	43	2Z1-007-05	917-4 BALL BEARING	73	2E9-051-01	PROOF WATER RING
12	2Q2-007-01	CLICK PAWL SPRING	44	2C1-123-01	INTERVAL COVER	74	2B2-027-03	BODY COVER
13	2E5-013-01	E3.0 RETAINER	45	2A4-019-05	ONE-WAY CLUTCH INNER TUBE	75	2E2-064-03	H30M-100 SCREW
14	2YT-453-01	SPOOL TOTAL ASSEMBLY	46	2YZ-015-01	ONE-WAY CLUTCH BEARING ASSEMBLY	76	2E2-031-01	A26M-075 SCREW
15	2W1-266-01	050-210 WASHER	47	2Q1-071-01	CAGE SPRING	77	2B4-009-01	BODY FLANGE
16	2F3-074-01	CLICK GEAR	48	2E2-052-02	F26M-080 SCREW	78	2YH-380-01	HANDLE TOTAL ASSEMBLY
17	2E2-092-01	B20M-050 SCREW	49	2F5-178-01	BEARING RETAINER	79	2F5-068-01	WORM SHAFT COVER
18	2E9-050-01	PROOF WATER RING	50	2Z1-008-05	1020-5 BALL BEARING	80	2E2-050-01	A20M-035 SCREW
19	2F6-120-01	ROTOR NUT HOLDING PLATE	51	2G2-170-01	PINION GEAR	81	2W4-006-01	SPACER
20	2E3-003-01	ROTOR NUT	52	2Z1-009-05	711-3 BALL BEARING	82	2E2-006-03	B26M-050 SCREW
21	2W1-265-01	092-160 WASHER	53	2C2-130-01	WORM SHAFT BUSH	83	2P1-021-01	OSCILLATING SLIDER PIN
22	2M3-154-01	MAIN SHAFT	54	2Z1-014-05	306-2.5 BALL BEARING	84	2F6-014-01	WATER SHIELD
23	2E0-010-02	X26M-060 SCREW	55	2C1-046-01	COLLAR	85	2F5-067-03	REAR COVER
24	2YR-074-01	BAIL TRIP COVER ASSEMBLY	56	2G3-095-01	OSCILLATING GEAR	86	2E2-095-01	B26M-050 SCREW
25	2R5-180-01	BAIL TRIP LEVER	57	2M4-006-01	WORM SHAFT	GEAR RATIO 4.3 SPECIAL PARTS		
26	2Q1-131-01	TAPPET SPRING	58	2W1-058-04	030-050 WASHER	51	2G2-172-01	PINION GEAR
27	2R5-183-01	GRIND LEVER	59	2E2-052-02	F26M-080 SCREW	56	2G3-097-01	OSCILLATING GEAR
28	2E0-008-01	BAIL HOLDER SCREW	60	2E2-009-02	F23M-060 SCREW	71	2G1-167-01	DRIVE GEAR
29	2R1-148-01	ROTOR	61	2M1-022-01	OSCILLATING SLIDER			
30	2E0-004-03	LINE ROLLER SCREW	62	2M5-001-01	LINE GUIDE PIN			
31	2Z1-001-05	508-2.5 BALL BEARING						
32	2R6-028-02	LINE ROLLER						

16